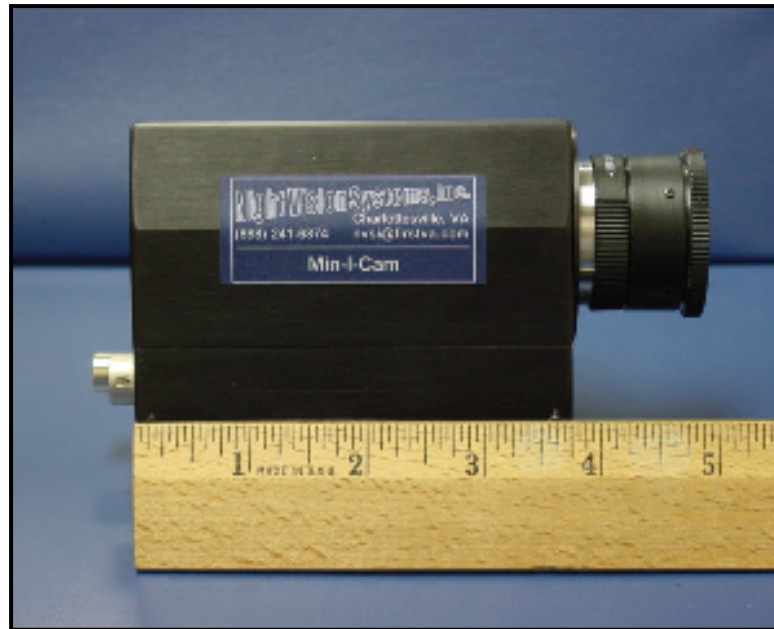


For more information contact:
Mike Thorsted 888-241-6874 X114
 e-mail: mthorsted@syntronics.net



Min-I-Cam

WEIGHS ONLY 12 OUNCES!
3.85" x 2" x 2.65"

The Min-I-Cam is an extremely compact, intensified, single piece camera that is ideal for covert surveillance applications (day or night). It has a custom image intensifier wired for gating and external gain control, a gate drive amplifier that switches the photocathode on and off, and an autogate circuit that controls gating and gain of the intensifier. Intensifier gate width and gain can also be manually controlled. The Min-I-Cam is available with a Gen II, Gen II XD-4, Gen III, Gen IV or UV intensifier.

	<u>Min-I-Cam 2 (Gen II)</u>	<u>Min-I-Cam 3 (Gen III)</u>
Type:	DEP XX2050 (XD-4), P-43 phosphor	ITT FS9911C, P-43 phosphor
Spectral Sensitivity:	350nm to 920nm	400nm to 940nm
Luminous Gain (2850°K):	30,000 typ. to 50,000 max	50,000 typ. to 80,000 max
Gate Mode:	Auto, internal, external	Auto, internal, external
Gate Width:	20ns to 34ms (up to 300kHz rep. rate)	50ns to 34ms (up to 20kHz rep. rate)
Gain:	Zero to max gain (0-10V input)	Zero to max gain (0-10V input)
Sensitivity:	5 x 10 ⁻⁵ lux full video 1 x 10 ⁻⁶ lux useable video	1 x 10 ⁻⁵ lux full video 5 x 10 ⁻⁷ lux useable video

CCD Camera:

Type: Interline transfer
Sensor: Sony ICX-258 (1/3" format)
CCD Pixels: 768(H) x 494(V)
Noise Figure: >50dB
Output Signal: RS-170 (NTSC)
Sync: Genlock or crystal controlled
VD and HD: TTL level
Connect to any VCR or frame grabber

Min-I-Cam 4 – Gen IV

Miscellaneous:

Input Power: 12 VDC, nominal 150mA
Size/Weight: 98mm x 51mm x 67mm, 0.35 kg
Lens Mount: 1" format, C-Mount with back focus adjustment
Options: S-20 photocathode for UV (180-830nm response)
Control box: Modes–auto, internal, external gating
Size–135mm x 64mm x 79mm
Battery-operated (12V) for remote applications
Min-I-Cam 1 – Gen II with no gating, no gain control

Min-I-Cam UV – S20 Gen II